



Project name:		Type
Catalog number:		
Location:		
Date:		
Comments:		

CONNECT-S-AD-SM

ORDERING INFORMATION

Product Code	Description	Color	Part Number
CONNECT-S-AD-SM	CONNECT Secondary Occupancy Sensor, Surface Mount, 120 - 277 V (requires primary sensor)	White	97124
Accessories			
IR-Adapter	IR Adapter for Smartphone (phone by others) to enable use of Smartphone Remote Control App	Black	92726
BSK Ball basket guard	Protective wire guard/basket for CIRCLE/CONNECT	White	92199
Adapter for CONNECT-SM	for mounting in standard metal box	White	97304



TOP FEATURES

- Line voltage Dual Technology PIR/Acoustic motion sensor with 360° detection view for approximately 1,000 square foot coverage area
- Extends motion detection coverage range of primary CONNECT sensor
- Protective wire guard/basket cover available

DESCRIPTION

The CONNECT delivers superior 360-degree detection coverage and excellent range. The combination of passive Infrared (PIR) and acoustic motion detection technologies reduces false triggers and offs. The CONNECT secondary sensor is wired to the CONNECT primary sensor to extend the overall motion detection coverage area. The secondary sensors are wired directly to line voltage and the sensor, eliminating the need for a separate power pack.

All of the settings of the CONNECT are remotely adjusted using our iOS or Android smartphone app via the required primary sensor. Masking blinds are included to limit the detection coverage pattern in certain applications to prevent false triggers and interference.

OPERATION

The CONNECT secondary sensor extends the motion detection coverage of the primary sensor by sending a pulse to the primary sensor indicating that motion is detected. The pause length between pulses sent to the primary sensor can be adjusted if necessary.

Please refer to the installation instruction/manual for a detailed description of functions and operation.

APPLICATIONS

■ Indoor applications:

Private and Open Offices
Conference Rooms
School/University Classrooms
Hotel Meeting Rooms
Healthcare and Laboratory Spaces

PRODUCT INFORMATION

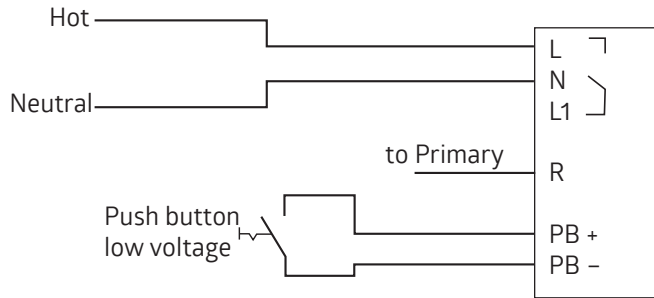
- Designed for indoor use in dry locations only
- Extends the motion detection coverage area of the CONNECT primary sensor. Requires a CONNECT primary sensor to function. Not compatible with CONNECT-P-DAA4G-SM, part number 97343.
- Up to 10 secondary sensors can be connected to a primary sensor.
- Pulse space between two pulses to the Primary, Detection and Acoustic sensitivity can be adjusted using our free Android and iOS apps.
- Self-test upon power up
- LED indicators for operation feedback and troubleshooting
- Masking blinds included to limit degree of motion detection coverage.
- ROHS and REACH compliant
- 5 years limited warranty

TECHNICAL DETAILS

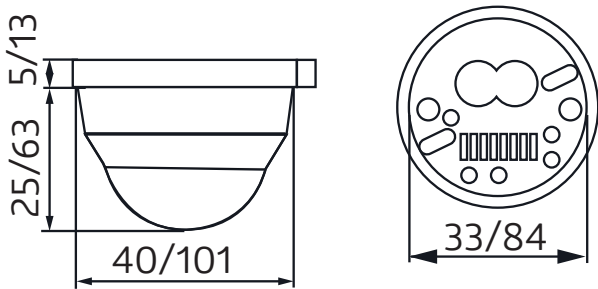
Operating Voltage: 120 - 277 VAC, 50 / 60 Hz
Power consumption: 0.8 W
Detection area: 360°
Detection range: Ø 78 ft/24 m across
Ø 26 ft/8 m towards
Ø 20 ft/6.4 m seated
Recommended Mounting Height: 8.2 ft / 2.5 m
Operating temperature: -13 °F to 122 °F/ -25 °C to +50 °C
Housing: UV- and shock resistant 5VA material
Protection: Suitable for indoor use and dry locations onl
Flame Rating: UL 945VA

Dimensions: Ø 3.98 x 2.99 inch
Ø 101 x 76 mm
Motion detection sensibility: Minimum - Medium - Maximum
Acoustic detection sensibility: Off - Minimum - Medium - Maximum
Factory settings
Motion detection sensitivity: High
Acoustic sensor: Off
Compliances: ETL listed for the U.S. and Canada (UL STD 60730-1 and CSA STD E60730-1). UL 2043 plenum rated.

WIRING DIAGRAM

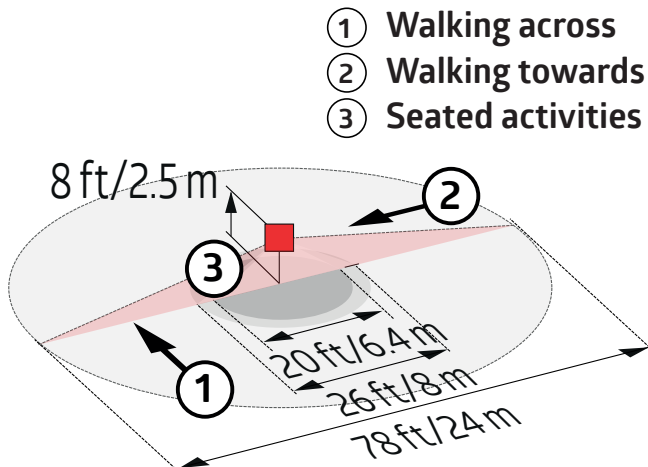


DIMENSIONS DRAWING

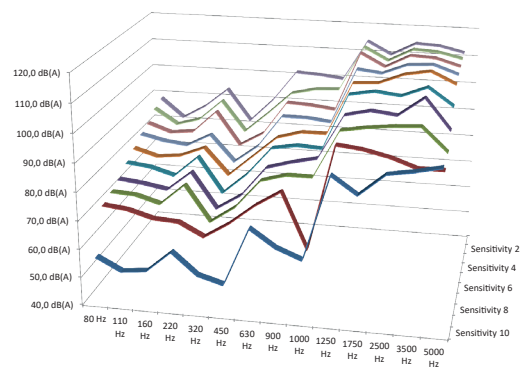


inch/mm

RANGE DRAWING



VOLUME SWITCHING THRESHOLD



Responsiveness to various frequencies and set sensitivities

NOTE: PRODUCT SPECIFICATIONS ARE SUBJECT TO CHANGE WITHOUT NOTICE.
PLEASE CONSULT THE B.E.G. CONTROLS WEB SITE FOR THE MOST RECENT PRODUCT SPECIFICATIONS.